

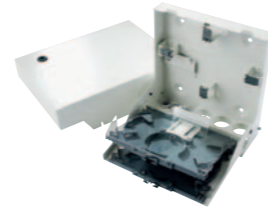
Ordering information

Fibre to long for



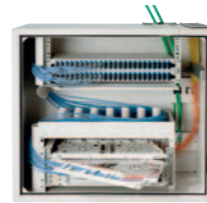
Splice closure Cros ITB

Nexans ref.	Product name	Dimensions mm
30799909	Cros ITB 48 splices	95x300x230
30798509	Cassette for Cros ITB , 24 fibres	20x140x205
30798609	Grommet for 12 cables 2,2-4 mm	
30798709	Grommet for 12 cables 4-6 mm	
30798909	Blind plug ITB	
30798809	Cable clamp for Cros ITB	



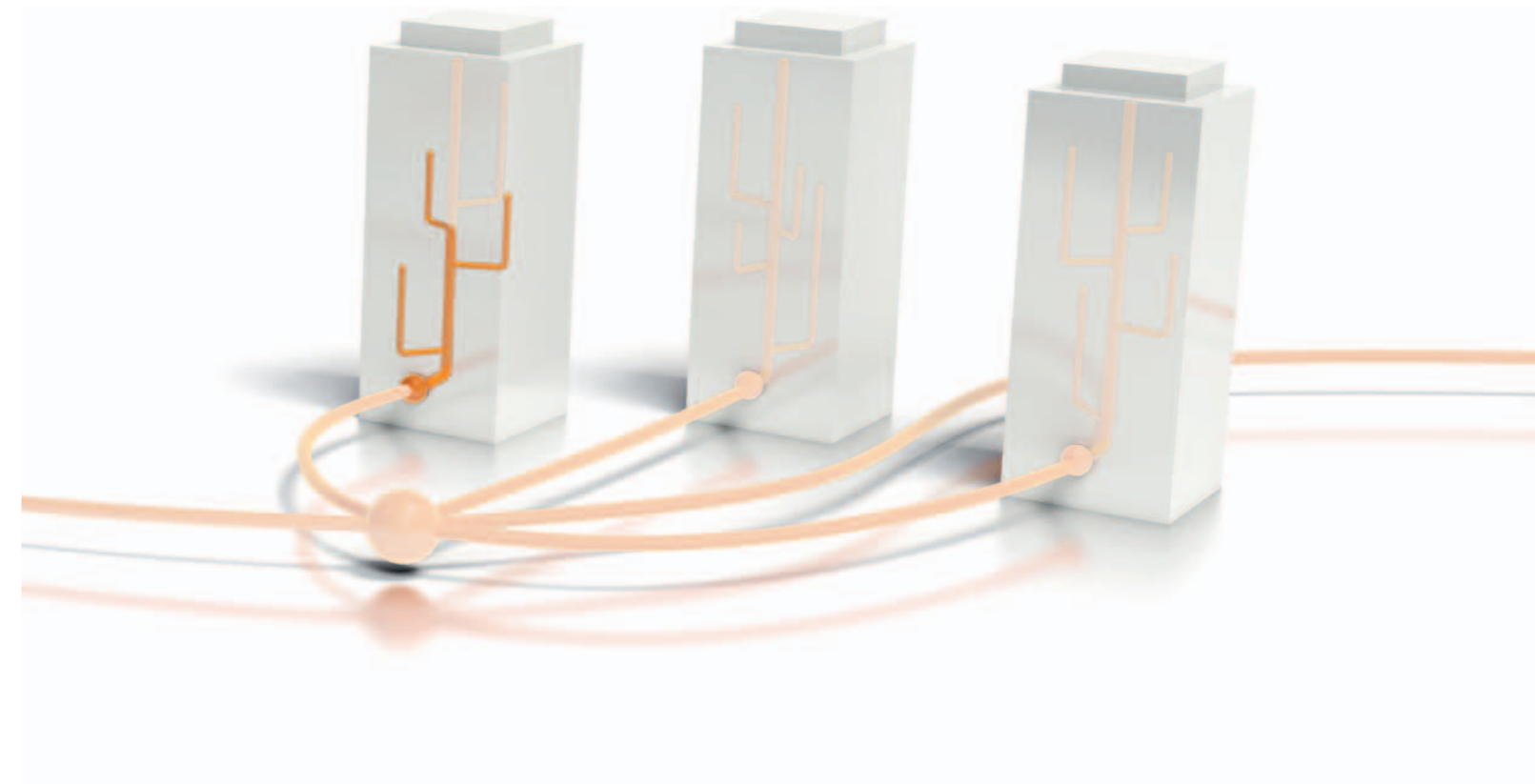
Building node cabinet N-HNS 192 fibres

Nexans ref.	Product name	Fibre count	Length m	Dimensions mm
30780509	N-HNS building node cabinet 192 fibres complete S			700x650x320
28138109	Pre-terminated KB201 24SC/UPC	24	3	
28138009	Pre-terminated KB201 48SC/UPC	48	3	
28138909	Pre-terminated KB201 24SC/APC	24	3	
28138809	Pre-terminated KB201 48 SC/APC	48	3	



Building node cabinet N-HNS 48 fibres

Nexans ref.	Product name	Length m	Dimensions mm
30780709	N-HNS building node cabinet 48 fibres complete S		580x410x185
30798509	Cassette, 24 fibres		20x140x205
30454509	Plastic hinge for splice cassette		
48891309	Fan-out 4xSC/UPC	1,0 + 0,6	
48890109	Fan-out 4xSC-APC	1,0 + 0,6	
48893409	Fan-out 2*SC/UPC+2*SC/APC	1,0 + 0,6	
48893509	Fan-out 4xLC/UPC	1,0 + 0,6	
48899409	Fan-out 4xLC/APC	1,0 + 0,6	
30116309	Adapter SM SC-Duplex		
30116409	Adapter SM SC/APC-Duplex		
30116709	Adapter SM SC-duplex green/blue		
30117409	Adapter SM LC 4 ports		
30117609	Adapter SM LC/APC 4 ports		



Construction principle: Without ducts
-flats

Nexans

Nexans IKO Sweden AB
Tel + 46 325-800 00
www.nexans.se

Nexans
Global expert in cables and cabling systems

Construction principle: Installation without ducts

With installation without ducts, you are free to install the cable directly in various environments, without ducting.

GNGGQBDV, TB or GAGQBUDV are often used in residential blocks because they are fire resistant and deliver excellent performance indoors and out (ducting is used outdoors). The cables are reinforced, making them easier to install in existing ducting where applicable.

Optical customer termination

Inside the flat, the fibre optic cable is terminated in an "@xs Optical Terminal Outlet". It is the last passive interface before the end user.

The outlet is designed for two fibres, and its small dimensions mean that G657 fibres are the best option. There is space for two fusion or mechanical splices.

The optical connectors are held in adapters that are protected inside the outlet. When a cable is removed from the outlet, the hole is automatically sealed to prevent injury from the laser.

Installation is possible in the existing ducting in the flat (PVC tubes and wall boxes) by adding the accessory "cable and winding kit" to the optical outlet.

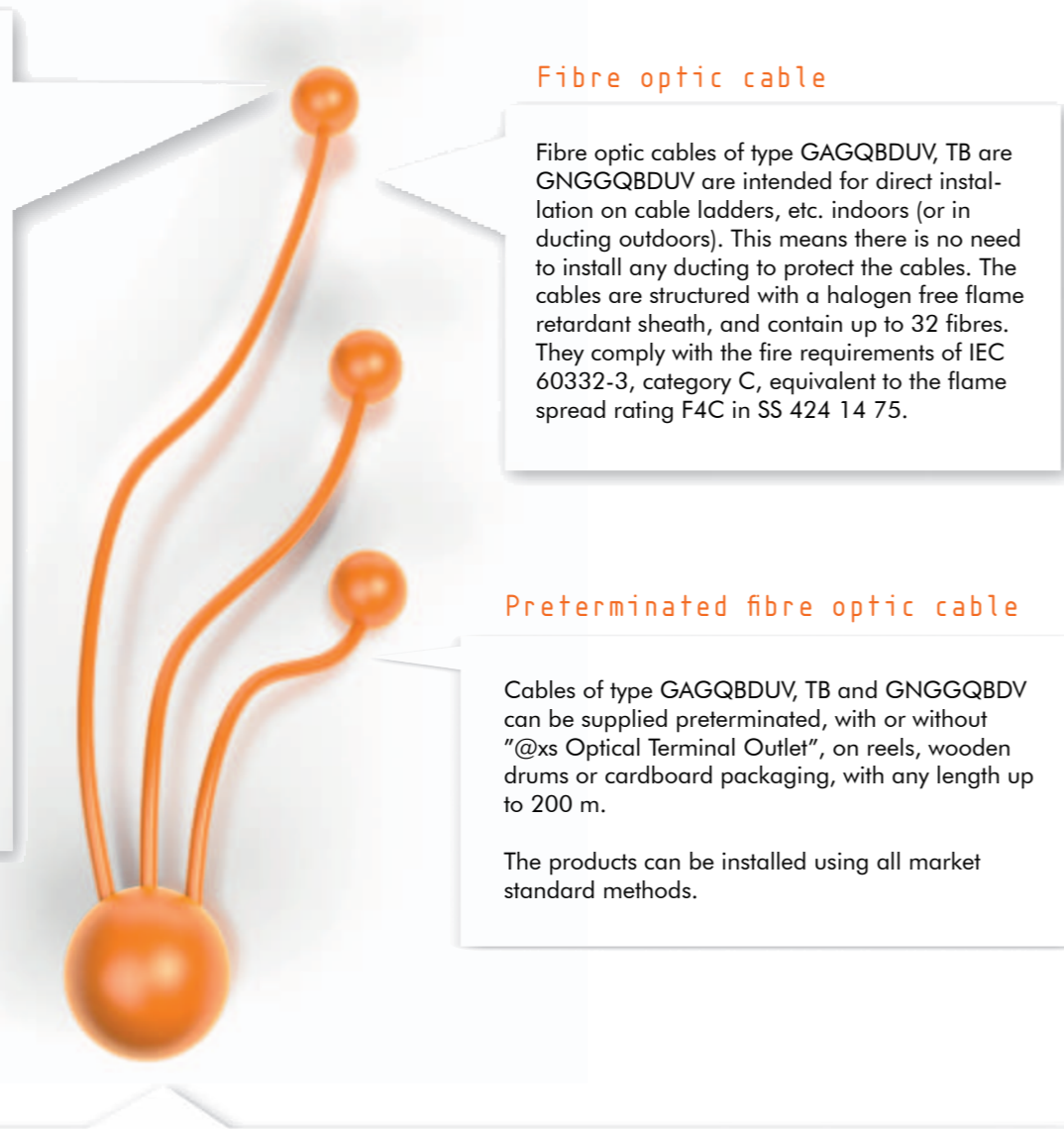
Fibre optic building nodes

The building node is usually installed in a locked room, for example in the cellar. The choice of components in the building node depends on the selected installation method.

The Cros ITB splice closure is used if the interface between the incoming cable and the property network is splice-based. The Cros ITB splice closure can be used to splice up to 96 fibres (ribbon) and up to 36 microcables and/or microducts can be connected in addition to the incoming cable.

But if the interface is patch-based, an N-HNS building node cabinet is used. There are two versions of the N-HNS building node cabinet – one for 48 fibres and one for 192 fibres. Both versions support patching, splicing, cable management and cable/tube/fibre handling.

The choice of whether to use splicing or patching in the building is a trade-off between cost and the need for a clear interface between the network owner (incoming cable) and the owner of the property network (property owner).



Fibre optic cable

Fibre optic cables of type GAGQBUDV, TB are GNGGQBDV are intended for direct installation on cable ladders, etc. indoors (or in ducting outdoors). This means there is no need to install any ducting to protect the cables. The cables are structured with a halogen free flame retardant sheath, and contain up to 32 fibres. They comply with the fire requirements of IEC 60332-3, category C, equivalent to the flame spread rating F4C in SS 424 14 75.

Preterminated fibre optic cable

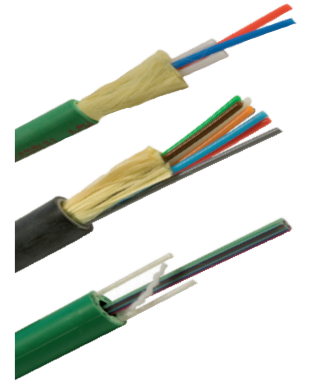
Cables of type GAGQBUDV, TB and GNGGQBDV can be supplied preterminated, with or without "@xs Optical Terminal Outlet", on reels, wooden drums or cardboard packaging, with any length up to 200 m.

The products can be installed using all market standard methods.

Ordering information

Fibre optical cables

Nexans ref.	Product name	Fibre count	Length m	Outer diam. mm
29056598	GNGGQBDV 2SM G652D	2SM	2000	4
29000098	GNGGQBDV 2SM G657A	2SM	2000	4
39850298	TB 2SM G652D	2SM	2000	4,7
39850498	TB 4SM G652D	4SM	2000	5,3
29041798	GAGQBUDV 4SM G652D	4SM	2000	5,5



Pre-terminated customer outlet GAGQBUDV

Nexans ref.	Product name	Fibre count	Length m	Outer diam. mm
48471009	Pre-term. customer outlet GAGQBUDV 4-SC/UPC	4SM	10	5,5
48471109	Pre-term. customer outlet GAGQBUDV 4-SC/UPC	4SM	20	5,5
48471209	Pre-term. customer outlet GAGQBUDV 4-SC/UPC	4SM	30	5,5
48471409	Pre-term. customer outlet GAGQBUDV 4-SC/UPC	4SM	50	5,5
48471609	Pre-term. customer outlet GAGQBUDV 4-SC/UPC	4SM	70	5,5
48471909	Pre-term. customer outlet GAGQBUDV 4-SC/UPC	4SM	100	5,5
48472009	Pre-term. customer outlet GAGQBUDV 4-SC/APC	4SM	10	5,5
48472109	Pre-term. customer outlet GAGQBUDV 4-SC/APC	4SM	20	5,5
48472209	Pre-term. customer outlet GAGQBUDV 4-SC/APC	4SM	30	5,5
48472409	Pre-term. customer outlet GAGQBUDV 4-SC/APC	4SM	50	5,5
48472609	Pre-term. customer outlet GAGQBUDV 4-SC/APC	4SM	70	5,5
48472909	Pre-term. customer outlet GAGQBUDV 4-SC/APC	4SM	100	5,5



Pre-terminated customer access cable GNGGQBDV

Nexans ref.	Product name	Fibre count	Length m	Outer diam. mm
48001309	Pre-term. cust. access cable GNGGQBDV 2xSC/UPC	2SM	30	4
48001509	Pre-term. cust. access cable GNGGQBDV 2xSC/UPC	2SM	50	4
48001709	Pre-term. cust. access cable GNGGQBDV 2xSC/UPC	2SM	70	4
48002009	Pre-term. cust. access cable GNGGQBDV 2xSC/UPC	2SM	100	4
48002509	Pre-term. cust. access cable GNGGQBDV 2xSC/UPC	2SM	150	4
48008309	Pre-term. cust. access cable GNGGQBDV 4xSC/UPC	4SM	30	4
48008509	Pre-term. cust. access cable GNGGQBDV 4xSC/UPC	4SM	50	4
48008709	Pre-term. cust. access cable GNGGQBDV 4xSC/UPC	4SM	70	4
48009009	Pre-term. cust. access cable GNGGQBDV 4xSC/UPC	4SM	100	4
48009509	Pre-term. cust. access cable GNGGQBDV 4xSC/UPC	4SM	150	4



@xs terminal outlet

Nexans ref.	Product name	Dimensions mm
30793009	@xs optical terminal outlet	28x75x100
30793509	@xs cable winding kit	Diam. 67

