

# Ordering information

Fibre to long for



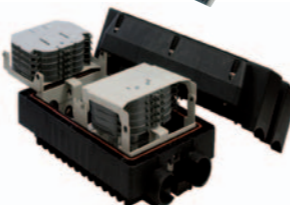
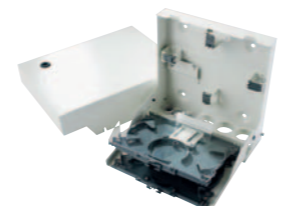
## @xs terminal outlet

Nexans ref.	Product name	Dimensions mm
30793009	@xs optical terminal outlet	28x75x100
30793509	@xs cable winding kit	Diam. 67



## Splice closures

Nexans ref.	Product name	Dimensions mm
30799909	Cros ITB 48 splices	95x300x230
30798509	Cassette for Cros ITB , 24 fibres	20x140x205
30798609	Grommet for 12 cables 2,2-4 mm	
30798709	Grommet for 12 cables 4-6 mm	
30798909	Blind plug ITB	
30798809	Cable clamp for Cros ITB	
30469709	Splice closure WTC1,5 MIDSP LT/RI 96 fibre	150x190x355
30469509	Splice closure WTC1,5 MIDSP LT/RI 144-fibre	150x190x355
30469809	Splice closure WTC1,5 LT/RI 96 fibre	150x190x355
30469609	Splice closure WTC1,5 LT/RI 144-fibre	150x190x355
30802009	Splice closure BPI 48	108x191x215



## Distribution outlets

Nexans ref.	Product name	Dimensions mm
30801309	Multiple connector outlet, MCO	35x126x195
30801009	Optical distribution outlet , ODO ID	28x98x174
30801109	Optical distribution outlet , ODO OD	30x98x174



Construction principle: Without ducts  
-houses

**Nexans**

Nexans IKO Sweden AB  
Tel + 46 325-800 00  
[www.nexans.se](http://www.nexans.se)

**Nexans**  
Global expert in cables and cabling systems

# Construction principle: Installation without ducts

**With installation without ducts, you are free to install the cable directly in various environments, without ducting.**

For areas with houses, GRLDV is laid directly underground (in sand) between the property area node and individual houses. If the customer termination is not installed directly inside the wall, it may be appropriate to change the cable type, so that a flame retardant, halogen free fibre optic cable is used indoors. Suitable cables include GAQDBV, GNGGQBUDUV, GAGQBUDUV or TB.

## Optical customer termination

In the house, the fibre optic cable is terminated in an "@xs Optical Terminal Outlet". It is the last passive interface before the end user. The outlet is designed for two fibres, and its small dimensions mean that G657 fibres are the best option. There is space for two fusion or mechanical splices.

The optical connectors are held in adapters that are protected inside the outlet. When a cable is removed from the outlet, the hole is automatically sealed to prevent injury from the laser.

Installation is possible in the existing ducting in the house (PVC tubes and wall boxes) by adding the accessory "cable winding kit" to the optical outlet.

## Property area node

A property area node in an area with houses is usually located in a manhole or a cabinet unless there is a suitable room in some kind of communal area. The node uses a splice closure as a distribution box.

If the node is installed in a manhole, the WTC 1.5 splice closure is used, which is IP68 rated and works in fully submerged manholes.

For boxes in traditional cable cabinets, either the WTC or the BPI 48 can be used. The BPI 48 is a compact, lockable, IP54 rated box that can also be installed on poles or facades.

If the splice point can be installed indoors, the Cros ITB can also be used.

## Property node

When optical fibres are installed in houses, it is often necessary to create an interface between the network owner's cable and the connecting cable of the house owner. The network owner needs round-the-clock access to the connection point of the property.

For the interface there is a choice between boxes for splicing (ODO OD(ODO ID indoors)) or patching (MCO). These compact boxes are made of plastic and are IP54 rated.

## Fibre optic cable

GRLDV is a fibre optic cable, developed by Nexans for direct burial in the ground without ducting. The cable is metal free and can contain 2-12 fibres. It can be supplied colour coded for easy identification during installation and laying.

If the customer termination is not installed directly inside the wall, it may be appropriate to change the cable type, so that a flame retardant, halogen free fibre optic cable is used indoors. Suitable cables include GAQDBV, GNGGQBUDUV, GAGQBUDUV or TB. These cables are available for between 2 and 32 fibres.

The fibre optic cables can be installed using all market standard methods.

## Preterminated fibre optic cable

Cables of type GAGQBUDUV, TB, GNGGQBUDUV and GAQDBV can be supplied preterminated, with or without "@xs Optical Terminal Outlet", on reels, wooden drums or cardboard packaging, with any length up to 200 m.

The products can be installed using all market standard methods.

# Ordering information

## Fibre optical cables

Nexans ref.	Product name	Fibre count	Length m	Outer diam. mm
29055998	GRLDV 2SM G652D	2SM	2000	7,8
29056098	GRLDV 4SM G652D	4SM	2000	7,8
29573201	GAQDBV 2SM G657A	2SM	500	1,3
29573202	GAQDBV 2SM G657A	2SM	1000	1,3
29573401	GAQDBV 4SM G657A	4SM	500	1,3
29573402	GAQDBV 4SM G657A	4SM	1000	1,3
29056598	GNGGQBUDUV 2SM G652D	2SM	2000	4
29000098	GNGGQBUDUV 2SM G657A	2SM	2000	4
39850298	TB 2SM G652D	2SM	2000	4,7
39850498	TB 4SM G652D	4SM	2000	5,3
29041798	GAGQBUDUV 4SM G652D	4SM	2000	5,5

## GAQDBV with SC connectors in @xs outlet

Nexans ref.	Product name	Fibre count	Length m	Outer diam. mm
48475009	Pre-terminated customer outlet @xs 2-SC/UPC	2SM	50	1,3

## GAQDBV with SC connectors

Nexans ref.	Product name	Fibre count	Length m
48477009	Pre-term. customer access cable for @xs 2xSC/UPC	2SM	50

## Pre-terminated customer outlet GAGQBUDUV

Nexans ref.	Product name	Fibre count	Length m	Outer diam. mm
48471009	Pre-term. customer outlet GAGQBUDUV 4-SC/UPC	4SM	10	5,5
48471109	Pre-term. customer outlet GAGQBUDUV 4-SC/UPC	4SM	20	5,5
48471209	Pre-term. customer outlet GAGQBUDUV 4-SC/UPC	4SM	30	5,5
48472009	Pre-term. customer outlet GAGQBUDUV 4-SC/APC	4SM	10	5,5
48472109	Pre-term. customer outlet GAGQBUDUV 4-SC/APC	4SM	20	5,5
48472209	Pre-term. customer outlet GAGQBUDUV 4-SC/APC	4SM	30	5,5

## Pre-terminated customer access cable GNGGQBUDUV

Nexans ref.	Product name	Fibre count	Length m	Outer diam. mm
48001309	Pre-term. cust. access cable GNGGQBUDUV 2xSC/UPC	2SM	30	4
48008309	Pre-term. cust. access cable GNGGQBUDUV 4xSC/UPC	4SM	30	4

